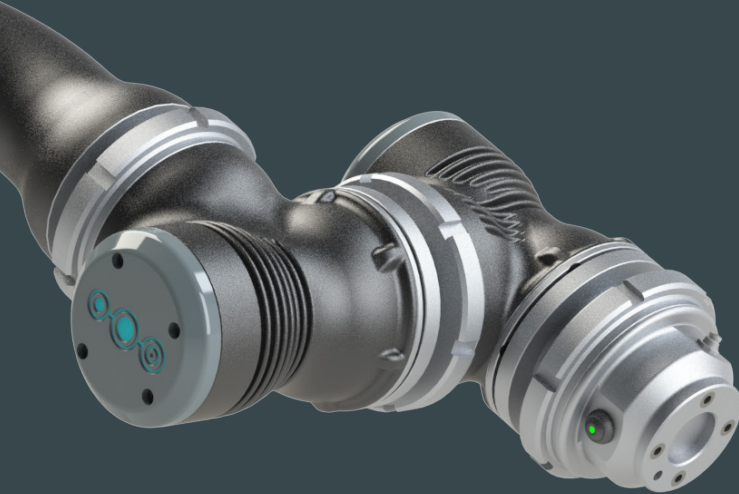


**MSiNNOV**  
MINTAKA SYSTEM INNOVATION



Modular cobotics made in France

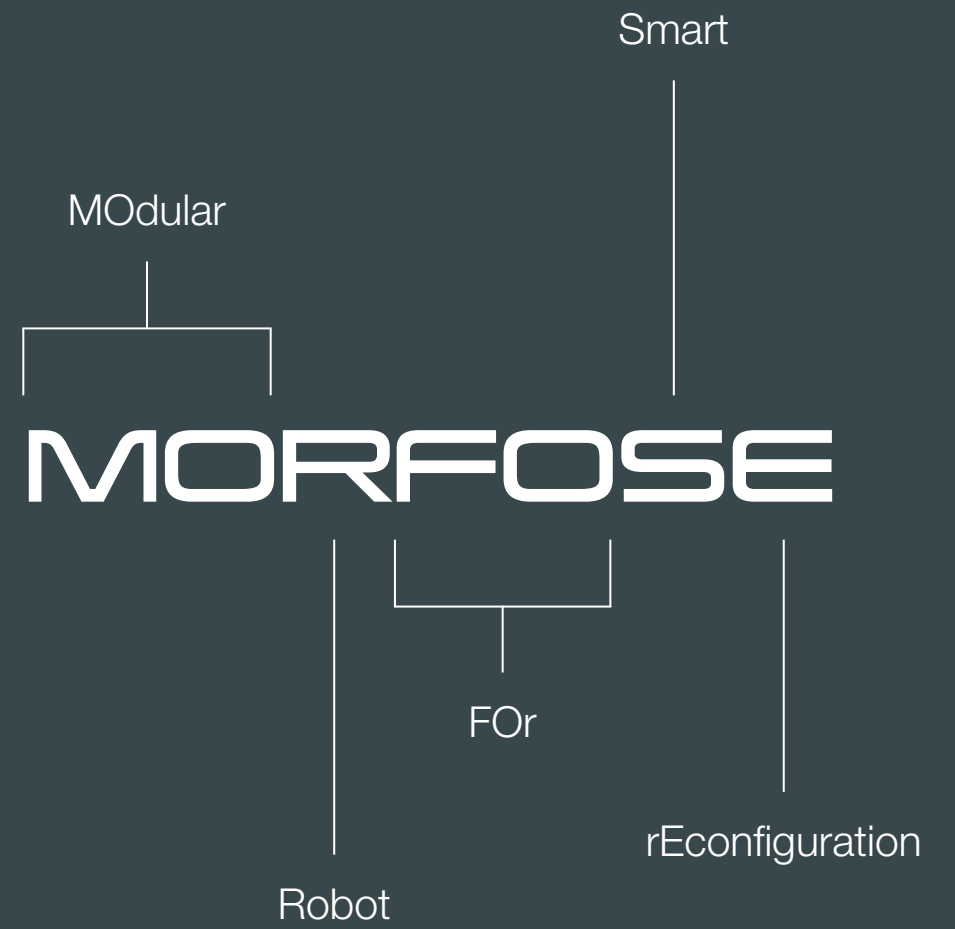
---

# OUR MISSION

Promote companies' agility and efficiency with  
people-centred technology solutions.



MORFOSE showcased at the Élysée Palace during the "Grande Exposition du Fabriqué en France" on July 1 and 2, 2023.

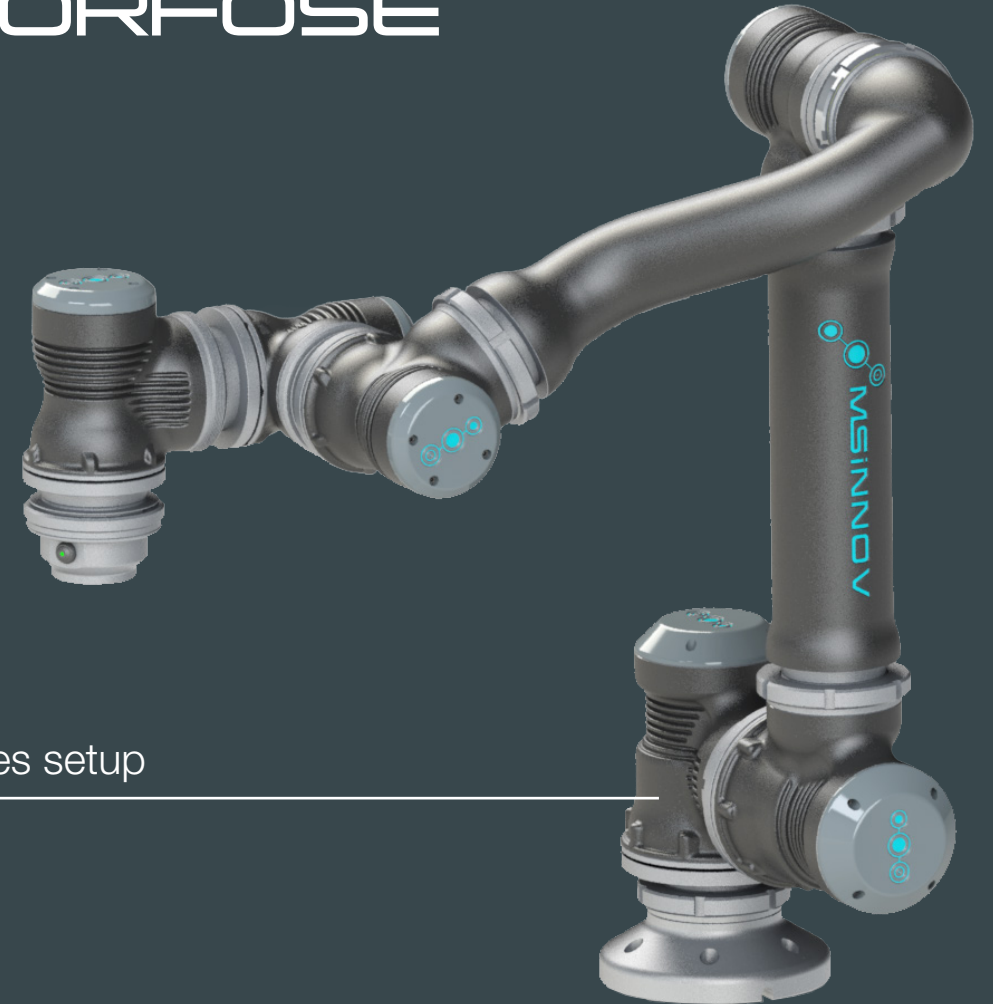


# MORFOSE

**The first modular industrial collaborative robot made in France.**

MORFOSE, a collaborative robot or “cobot”, stands as a real opportunity to successfully combine **agility** and **efficiency** while keeping people at the top of your project. Adaptable to the production of many industrial sectors, it can cover a wide range of needs. Thanks to its versatility, this **innovative multi-purpose tool** is able to replace a huge array of robotic configurations. MORFOSE is definitively a responsible investment, adapting to your current and future requirements. For sure, MORFOSE will be up to your ambitions.

# MORFOSE



6-axes setup



+ 2-axes positioner





MORFOSE modules.

# MODULARITY

**Choose MORFOSE and become a part of the industry of the future.**

Fully modular, MORFOSE will perfectly suit with its environment and its operator's needs. Among the main assets, the **revolutionary modular** fastener system allows the modules interconnexion in your chosen configuration. In only **10 minutes**, you can adapt it to your production line, ensuring that your cobot is used to its full potential and that your performance is upgraded.

# INFINITE ROTATION

**A global innovation to increase productivity.**

Each MORFOSE's module has infinite rotation capacity. Depending on your use cases, this can significantly improve your **cycle time** and therefore your **productivity**.

This innovation allows you to use modules **remotely** and **synchronously** so you can control turntables or conveyors on demand.

Last but not least, MORFOSE modules are **interchangeable** and **re-employable** which extends their lifespan, ensure that your production tools are always available, and help tackle the industrial solutions' obsolescence.

MS-Innov undertakes a **circular economy** approach for its products and services design and production. Working with ADEME, the French Agency for Ecological Transition, we already carried out a **life cycle analysis** of our cobot in order to be sure that we provide our customers the most sustainable product possible.

# USE CASES

What MORFOSE can do for you...



## HANDLING

Loading and unloading machines;  
Palletisation; Pick and place.



## QUALITY CONTROL

Measuring; Testing; Inspecting.



## ASSEMBLY

Screwing; Bonding; Welding; Riveting;  
Crimping.



## APPLYING MATERIALS

Liquids, pastes or powders.



## REMOVING MATERIALS

Finishing; Sanding; Grinding;  
Deburring; Engraving.

## TECHNICAL DATA

|                                 |   |
|---------------------------------|---|
| <b>Reconfiguration time</b>     | 10 minutes  |
| <b>Number of axes</b>           | up to 7 + remote synchronised axes                          |
| <b>Payload</b>                  | up to 27 kg   |
| <b>Communication</b>            | all industrial environments                                 |
| <b>Sweeping angle</b>           | infinite  |
| <b>Reach</b>                    | up to 1200 mm   |
| <b>Collaboration operations</b> | Free Drive, contact sensing, speed settings, limiting zones |
| <b>Repeatability</b>            | 0,1 mm  |
| <b>Manufacturer's guarantee</b> | 15 months   |

# EASY PROGRAMMING

Don't be afraid to join MORFOSE adventure - it's easy to use!

Internally developed, our **MARCUS** software guarantees easy programming so that almost anyone can use it. Its intuitive environment means that **no programming knowledge is required** to use our software solution. Our aim here is to make human-machine interactions accessible and to democratise robotics use.

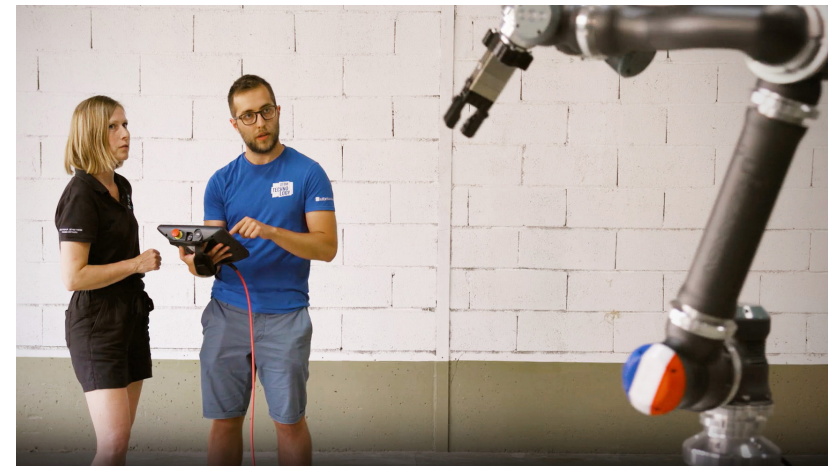


The programming interface of our MARCUS software.

# TRAINING COURSES

MS-Innov and our certified partners provide training courses to meet your responsiveness and proximity needs

- 🎯 Follow the half-day introduction to piloting MORFOSE and become autonomous in programming with node diagrams
- 🎯 With an extra day, you can enrich your programming skills to master MORFOSE, its peripherals, tools and variables.

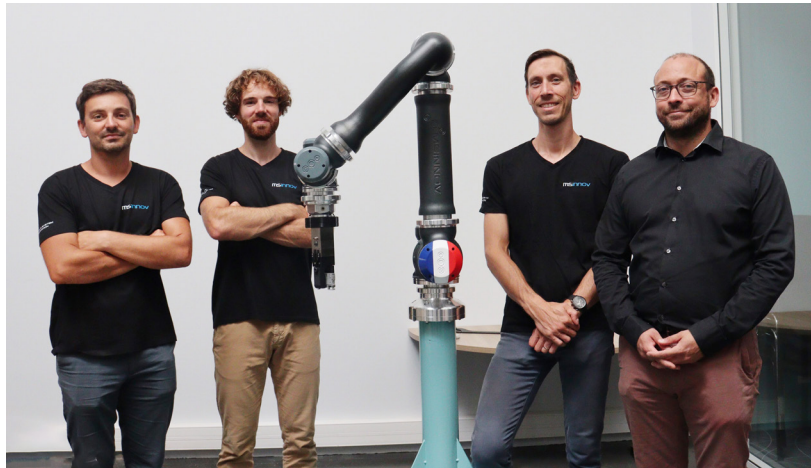


MORFOSE programming training with our user-friendly software





*The MS-Innov team, Belfort.*



*Théo Rougemont - Operational Director ; Robin Jayé - Software Manager ; Aurélien Heck - Engineering Manager ; Julien Morel - CEO ; with MORFOSE.*

# MS-INNOV

## **A human adventure.**

As the **first French-owned company** to develop, design, assemble and market an industrial robot, MS-Innov, based in the **Territoire de Belfort** Department, is breaking new ground in the robotics market with MORFOSE.

Our modular cobot embeds **major innovations** whilst bringing the human touch back into the equation.

Our guideline is to help industry bring new technologies into the mainstream.

Our multi-skilled thirty-strong team – motivated and ambitious - is ready to face the industrial, technological and human challenges of **the industry of the future** with our own philosophy...

*Agility for all, with everyone*



# HISTORY

**2015** On January 2, **Julien MOREL** decided to set up a business and created **MS-Innov** with the strong willing to combine human values and industrial efficiency.

**2019** MS-Innov go ahead its innovation work about technologies' democratisation through a research partnership with **UTBM** as part of a **CIFRE** thesis focusing on robotics.

**2021** Supported by the **Plan de Relance** [recovery plan] to pursue its **R&D** phase, MS-Innov officially announced the industrial development of MORFOSE on January 1.

**2023** After two years of work, MS-Innov finalised its project by **launching** its flagship product **MORFOSE** in October...

# IDENTITY

## **Our values, our DNA.**

MS-Innov is not only defined by its mission – the values we uphold are an integral part of our identity. **Human relationships** and our teams committed to **sharing, transparency** and **listening** are at the very heart of our company. Thanks to our development, we are now able to share our vision with solutions and actions that have an ever-greater impact on our ecosystem.

*Ethics · Commitment*

*Agility · Prospectivity*

---

A CERTIFIED COMPANY



MEMBER OF



AND FUNDED BY



*Agility for all,  
with everyone.*



1A rue Jacqueline Auriol  
90000 Belfort, France  
+33 (0)3 39 03 41 60



[ms-innov.com](http://ms-innov.com)